



SouthCoast  
**Community  
Foundation**

2024 ANNUAL REPORT



# 2024

## BOARD OF DIRECTORS

### YEARS OF BOARD SERVICE

### EXECUTIVE COMMITTEE

Kate Alves  
Linda Bodenmann  
Janet Coquillette  
Gail Fortes  
Jayne Rebello-Korn  
Nathaniel Rodriguez  
Maria Rosario  
Cynthia Rose  
Jonathan Rounds  
Anne Tangen  
Dr. Melanie Edwards-Tavares  
*President & CEO*

2023-present  
2002-2025  
2023-present  
2020-present  
2020-present  
2023-present  
2018-present  
2018-2024  
2020-present  
2023-present

**Gail Fortes**  
*Board Chair*

**Jayne Rebello Korn**  
*Vice Chair*

**Linda Bodenmann**  
*Past Chair*

**Maria Rosario**  
*Clerk*

**Jonathan Rounds**  
*Assistant Clerk*

**Anne Tangen**  
*Treasurer*

## COMMITTEES

### Arts & Culture Committee

Janet Coquillette - *Chair*  
Michael Benevides  
Irene Buck  
Carl Cruz  
Priscilla Ditchfield  
Yvonne Drayton  
Jackie Francisco  
Walter "Sandy" Frazee  
Rayana Grace  
Kathleen Hancock  
Helena Hartnett  
Kim Igoe Kasper  
Lawrence Jenkins  
Vieira Levitt  
James McKeag  
Robert Mendes  
Ashley Occhino  
Glenn Oliveira  
Patti Rego  
Eve Rounds  
Margo Sauliner

### Finance Committee

Anne Tangen - *Chair*  
Kate Alves  
John Beauregard  
Mike Falvey  
Dawn Salerno  
Louis Sousa  
Jonathan Rounds

### Governance Committee

Jayne Rebello Korn - *Chair*  
Linda Bodenmann  
Maria Rosario  
Cynthia Rose  
Dawn Salerno

### Grants Committee

Carl Cruz - *Co-Chair*  
Glenn Oliveira - *Co-Chair*  
Jeff Bradley  
Merry Conway  
Janet Coquillette  
Seth Garfield  
Zach Gerson-Nieder  
Cynthia Rose  
Susan Perry  
Andrea Rodrigues

### Investment Committee

Kate Alves - *Chair*  
Michelle Buckley  
Tim Dyer  
John Korn  
Jonathan Rounds  
Eric Strand  
Anne Tangen  
Richard Wolfson

### Audit Committee

Linda Bodenmann - *Chair*  
Gail Fortes  
Jonathan Rounds  
Linda Bodenmann  
Maria Rosario  
Anne Tangen

### Racial Equity Committee

Maria Rosario - *Chair*  
Gail Fortes  
Craig Lindell  
Nathaniel Rodriguez  
Jonathan Rounds

### Scholarship Committee

Erik Dominguez - *Chair*  
Cassandra Bruny  
Merry Conway  
Carl Cruz  
Patricia DeAngelis  
Zoe Hansen DiBello  
Katia Dominguez  
Romayne Grace  
Patrick Grime  
John Korn  
Lynn Mastera  
Andrea Rodrigues  
Nathaniel Rodriguez  
Cynthia Rose

*This vibrant rooster sculpture is part of Bordalo II's acclaimed "Big Trash Animals" series, created using recycled materials. The installation is the result of a collaborative effort between the Massachusetts Design Art Technology Institute (DATMA) and Greater New Bedford Vocational Technical High School.*

**Dear Friend,**

2024 was a turning point, a year of transformation, renewed purpose, and deeper connection.

The SouthCoast Community Foundation launched a bold new 5G/4C strategy that redefined our role in the region, grounding our work in five Gateway Cities with five strategic goals, and anchoring us across four counties through four core commitments: building capacity, capital, community, and culture.

Our staff and board visited dozens of cities and towns, from Fall River and New Bedford to Brockton, Attleboro, Easton, and beyond. We listened. We took note. And we doubled down on what matters most: showing up for the communities we serve.

We also moved into a new, street-level headquarters, intentionally designed for connection, collaboration, and action. Located in the heart of New Bedford's West Central neighborhood, directly across from a city bus stop and surrounded by unmetered on-street parking, the space serves as a hub for grantmaking, donor services, and philanthropic advising, and as a welcoming, visible community resource. Rooted in the neighborhoods we serve, it was built to support a stronger, more connected region.

**We want our communities to know who we are, see where we are, and understand what we do.**

Thanks to the generosity of our donors, we were proud to award over \$3 million in grants to approximately 228 nonprofit organizations, a mix of donor-directed support and community investments guided by staff and our Grants Committee. In this report, you'll see how those dollars were allocated to meet urgent needs and expand opportunity across Southeastern Massachusetts.

In addition, in 2024, we broke another record, awarding \$847,495 in scholarships, our highest total to date, and opening five new scholarship funds. This milestone reflects our shared, ongoing commitment to supporting students and families as they pursue education, expand opportunity, and invest in the future of our region.

This work is sustained by the leadership of our dedicated Board of Directors and staff, supported by active volunteer committees, and strengthened by our trusted partners at Prime Buchholz, one of the nation's most respected investment consulting firms, advising many of the country's largest and most established community foundations.

Together, we ensure strong stewardship to preserve and grow a reliable source of funding for generations to come.



*At the heart of this transformation is our new mission:*

**Uniting people, resources, and organizations to support our communities.**

This is more than a statement—it's a promise. A commitment to lead with purpose and to center community in all we do. It's anchored by the values that define us:

- **Bold Leadership** – Rising to the moment with courage and clarity
- **Trusted Expertise** – Bringing data, knowledge, and experience to the table
- **Partnership & Collaboration** – Believing that relationships are the most powerful driver of change

Coming out of 2024, the SouthCoast Community Foundation will be known as much for being the region's preferred vehicle for charitable giving as for being a catalyst for change.

We are igniting collective action to strengthen our communities. Through capacity building and strategic grantmaking, we continue to invest in a resilient nonprofit sector, ensuring changemakers have the resources, expertise, and connections they need to drive lasting solutions.

As a convener of voices, we foster dialogue and elevate regional understanding, equipping our communities to tackle challenges, seize opportunities, and shape a more vibrant future together. This strategic repositioning is reshaping our operations and our culture, aligning who we are with the future we're building.

As we celebrate our 30th anniversary, we are reflecting and moving forward, with clarity, ambition, and resolve. The result? A stronger foundation—literally and figuratively—for the decades ahead. One that is rooted in community, powered by partnerships, and guided by a bold vision for the future.

We're proud of how far we've come. And one thing is clear—we're just getting started.

With deep gratitude,

A handwritten signature in black ink that reads "Melanie A. Edwards-Tavares".

**Dr. Melanie Edwards-Tavares**  
PRESIDENT AND CEO

A handwritten signature in black ink that reads "Gail M. Fortes".

**Gail Fortes**  
BOARD CHAIR

# BUILDING THE FOUNDATION FOR THE NEXT

# 30 years

In 1995, something remarkable took root here on the South Coast. With a powerful vision and a \$100,000 charitable gift, the SouthCoast Community Foundation was born, uniting donors with the causes they care about most.

Our team continues to focus on careful endowment stewardship. At the end of 2024, total assets stood at approximately \$62 million, and our total fund investment return for the year was 10.3 percent\*. In addition, we raised \$2.38M in new gifts. With close to 5,000 donors, and 196 funds, the Foundation has become both a stabilizing force in times of crisis, and a catalyst for growth, change, and innovation. Your investments, and our shared commitment, have allowed us to serve hundreds of thousands of residents across Southeastern Massachusetts.

## STATEMENT OF FINANCIAL POSITION

AS OF DECEMBER 31, 2024

<b>ASSETS</b>	
Current Assets	8,177,923
Property and Equipment, Net	13,632
Non-Current Assets	53,856,192
<b>TOTAL ASSETS</b>	<b>62,047,747</b>
<b>LIABILITIES AND NET ASSETS</b>	
Current Liabilities	1,149,979
Non-Current Liabilities	1,839,858
<b>TOTAL LIABILITIES</b>	<b>2,989,837</b>
<b>NET ASSETS</b>	
Without Donor Restrictions	48,968,120
With Donor Restrictions	10,089,790
<b>TOTAL NET ASSETS</b>	<b>59,057,910</b>
<b>TOTAL LIABILITIES AND NET ASSETS</b>	<b>62,047,747</b>

## STATEMENT OF ACTIVITIES

FOR THE YEAR ENDED DECEMBER 31, 2024

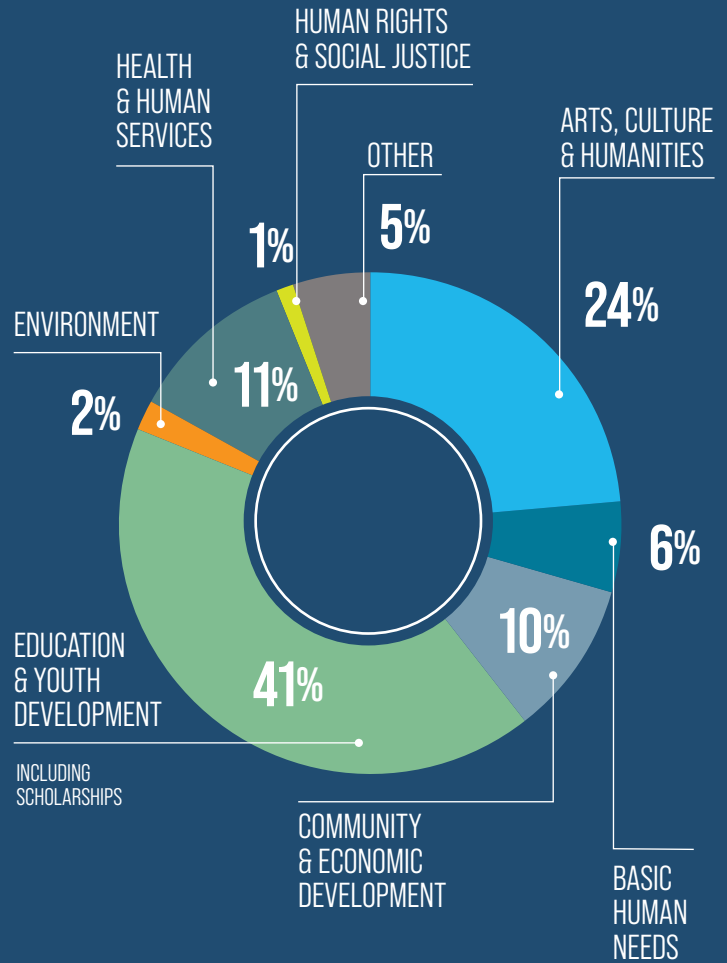
<b>REVENUES, SUPPORT AND OTHER INCOME:</b>	
Grants and Contributions	7,894,122
Investment Return	5,105,614
Other Miscellaneous Revenue	(9,254)
<b>TOTAL REVENUES, SUPPORT AND OTHER INCOME:</b>	<b>12,990,482</b>
<b>FUNCTIONAL EXPENSES</b>	
Program Services	6,441,003
Administrative	688,705
Fundraising	300,603
<b>TOTAL FUNCTIONAL EXPENSES</b>	<b>7,430,311</b>
<b>CHANGE IN NET ASSETS</b>	<b>5,560,171</b>
<b>NET ASSETS - BEGINNING OF THE YEAR</b>	<b>53,497,739</b>
<b>NET ASSETS - END OF YEAR</b>	<b>59,057,910</b>

# NONPROFIT GRANT RECIPIENTS

- 3rd Eye Youth Empowerment
- Allens Pond Wildlife Sanctuary of Mass Audubon
- All Hands and Hearts
- Alma del Mar Foundation Inc.
- American Friends Service Committee
- Appalachian Mountain Club
- Apponequet Regional High School
- Art Center Sarasota
- Assawompset Elementary School PTO
- Benjamin Franklin Cummings Institute of Technology
- Big Fluffy Dog Rescue
- Boston Prep Charter School
- Boston Rescue Mission
- Boys and Girls Club of Greater New Bedford/Wareham
- Bristol Black Collective
- Bristol Community College Foundation
- Brockton Family & Community Resources
- Buttonwood Park Zoological Society
- Buzzards Bay Coalition
- Buzzards Bay Music Fest
- Cape Cod Collaborative
- Cape Verdean Association in New Bedford, Inc.
- Catholic Charities of the Diocese of Fall River
- Catholic Charities South
- Catholic Social Services - Sr. Rose House
- CEDC- Community Economic Development Center of SE MA
- Centro Comunitario de Trabajadores
- Centro de Ayuda y Esperanza Latina, Inc.
- Child & Family Services, Inc.
- Children's Advocacy Center, a program of JRI
- Children's Environmental Literacy Foundation
- Children's Museum of Greater Fall River
- Citizens for Citizens
- City of New Bedford-Parks Recreation & Beaches
- Coaching4Change
- Coalition for Health Equity & Early Development
- Coastal Foodshed Inc.
- Coastal Neighbors Network, Inc.
- Co-Creative Center
- Community Boating Center
- Community Nurse Home Care, Inc.
- Confikids, Inc
- Dartmouth Natural Resources Trust
- Dartmouth Public Schools
- Dennison Memorial Community Center
- Dream Out Loud Center
- East Bay Food Pantry
- Easton Garden Club
- Entrepreneurship for All
- Epiphany School, Inc.
- Escuela Agricola Panamericana (Zamorano University)
- Fall River Arts and Culture Coalition
- Fall River Council on Aging
- Fall River Fabric Festival
- Fall River Historical Society
- Fall River Pride Committee
- Family Pantry- Damien's Place
- Family Pantry of Cape Cod
- Farm and Community Collaborative Inc.
- FCNL Education Fund
- Fellowship of Reconciliation
- First Baptist Church - Fall River
- Freetown Council on Aging
- Freetown Elementary School PTO
- Freetown-Lakeville Middle School PTO
- Freetown-Lakeville School Dept-Curriculum and Instruction
- Friends of Buttonwood Park
- Friends of Jack Foundation
- Fundação Faialense, Inc.
- Gallery X, Inc.
- George R. Austin Intermediate School PTO
- Global Learning Charter Public School
- Gnome Surf
- Greater Fall River Art Association
- Groundwork Southcoast
- Hearts 4 Paws, Inc.
- Immigrants' Assistance Center, Inc.
- Jewish Federation of Greater New Bedford
- Junior Achievement of Southern Massachusetts, Inc.
- Katie Brown Educational Program
- Lakeville Council on Aging
- LEADS Massachusetts
- Little Compton Food Bank
- Lloyd Center for the Environment
- Marion Institute
- Marstons Mills Village Association
- Massachusetts Design Art & Technology Institute
- Mass Cultural Council
- Meadowbrook School of Weston Incorporated
- Mercy Meals and More
- Metta Rising
- Millicent Library
- M.O. L.I.F.E., Inc.
- Mount Holyoke College
- Narrows Center for the Arts
- Nativity Preparatory School of New Bedford
- Nemasket Group, Inc.
- New Bedford Art Museum/ArtWorks!

(continued on next page)

# GRANTS BY AREA



\* Approximately 73% of grants were directed by the Foundation's donors, and 27% were Foundation-directed.



2024 SCCF Scholarship Awards at the Killburn Mill, New Bedford.

# NONPROFIT GRANT RECIPIENTS

(continued from previous page)

- New Bedford Ballet Foundation, Inc.
- New Bedford Community Health
- New Bedford Creative / New Bedford Economic Development Council
- New Bedford Festival Theatre
- New Bedford Fishing Heritage Center
- New Bedford Historical Society
- New Bedford Light, Inc.
- New Bedford Port Society
- New Bedford Public Schools
- New Bedford Research & Robotics
- New Bedford Star Kids Scholarship Program
- New Bedford Symphony Orchestra
- NOFA MA
- North Bennet Street School
- NorthStar Learning Centers
- Oberlin College & Conservatory
- Old Dartmouth Historical Society
- Old Rochester Regional School District
- OneGoal
- One Southcoast Chamber
- Osterville Baptist Church
- Our Lady of Light Band
- Our Sisters' School
- PACE, Inc.
- Pan-Mass Challenge
- People Incorporated
- Pioneer Institute
- Portuguese United for Education d/b/a/ Discovery Language Academy
- PRASAD Project
- Prince Henry Society of Massachusetts, Inc.
- Reach Out and Read
- Rochester Council on Aging
- Rotch-Jones-Duff House
- Round the Bend Farm
- Roxbury Latin School
- Saint Mary's Catholic Church
- Santa Cecilia Band
- Sarasota Alliance for Historic Preservation
- School on Wheels
- Schooner Ernestina
- Schwartz Center for Children
- Seaglass Theater Company
- Seven Hills Food Pantry
- Slow Money Institute
- Somerset Council on Aging
- Sound Explorations
- Southcoast Chamber Foundation
- South Coast Community Chorale
- Southcoast Health
- Southcoast Health Systems - VNA
- SouthCoast LGBTQ Network, Inc.
- Southeastern Massachusetts Ser-Jobs For Progress Inc.
- Southern Poverty Law Center

- Spinner Publications
- Spirit of Somerset Festival
- St. Andrew's Episcopal Church
- St. Anthony's Band Club Inc.
- Steppingstone, Inc.
- St. George's School
- Superflat New Bedford
- Swansea Council on Aging
- Swansea School Department
- Teach for America - Greater Boston
- Team Noah Foundation
- The Arc of Bristol County
- The Bridge - A Center for Hope and Healing
- The Catholic Foundation of Southeastern Massachusetts
- The Greater Fall River Community Food Pantry
- The John Martins Foundation
- The Loft School of Marion, Inc.
- The Play4Peace Initiative
- Theresa Street, Inc.
- The Rotch-Jones-Duff House & Garden Museum
- The Salvation Army Canton
- The Salvation Army Fall River
- The Women's Center
- Tifereth Israel Congregation
- Tougaloo College
- Town of Dartmouth
- Town of Gosnold
- Town of Marion
- Town of Westport
- Tri-County Music Association
- Turimiquire Foundation
- UMass Dartmouth Foundation
- United Interfaith Action of SE Massachusetts
- United Way of Greater New Bedford
- United Way of Plymouth County
- United Way of Rhode Island
- Veterans Transition House
- Watuppa Rowing Center
- Westport Council on Aging
- Westport Historical Society, Inc.
- Westport River Watershed Alliance
- Westtown School
- WHALE- Waterfront Historic Area League
- Women's Fund SouthCoast
- Woods Hole Oceanographic Institution
- Woodwell Climate Research Center
- YEAH! Corps
- YMCA Southcoast
- Your Theatre, Inc.
- Youth Musical Theater Corp.
- Youth Opportunities Unlimited, Inc.
- YWCA of Southeastern MA
- Zeiterion Theatre, Inc.

# AT-A-GLANCE



**196**  
TOTAL FUNDS



## NEW SCHOLARSHIP FUNDS IN 2024

- CAMBRA SCHOLARSHIP FUND
- FRED AND BETTY WORSH SCHOLARSHIP FUND
- NANCY ALLUA URBAN AND FRANK RODRIQUES SCHOLARSHIP FUND
- RICHARD S. ANDERSON & ARTHUR F. ANDERSON SCHOLARSHIP FUND
- ROBERT F. SOUZA MEMORIAL SCHOLARSHIP FUND



# OUR COMMITMENT TO COMMUNITY

*“Our commitment to community means we are always learning, always evolving, and always accountable—to one another and to the people and places we serve.”*

— GAIL FORTES, SCCF BOARD CHAIR, EXECUTIVE DIRECTOR, YWCA OF SOUTHEASTERN MA

**We are guided by a deep sense of responsibility,** to our mission, to the resources entrusted to us, and to the communities we serve. And we take that responsibility seriously.

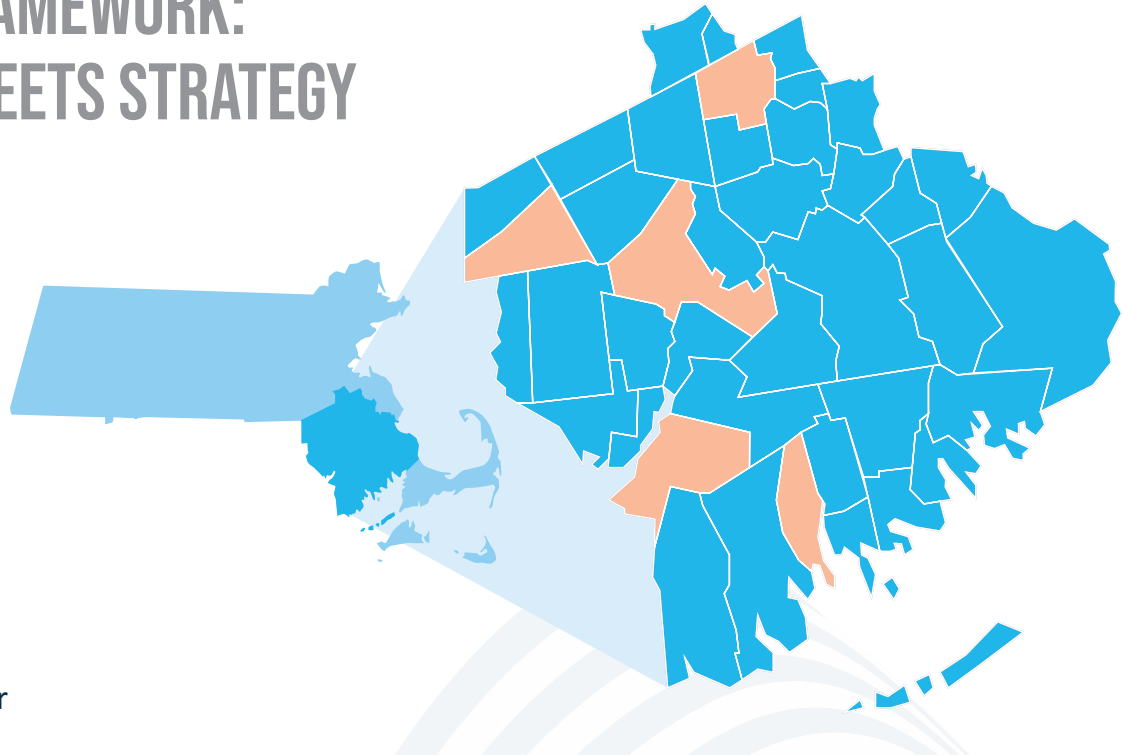
**Trusted expertise is not just about what we know,** it’s about how we listen, how we adapt, and how we show up when it matters most.

**Partnership and collaboration are values we practice every day.** Our commitment to the community is grounded in trust, proximity, and accountability.

These are our community commitments and if staying silent is a choice. **We choose to lead boldly.**

# OUR 5G/4C FRAMEWORK: GEOGRAPHY MEETS STRATEGY

The SouthCoast Community Foundation serves a vibrant and diverse region of **41** communities, home to **1.1 million** residents, stretching across **four** counties and **five** Gateway Cities. We call this framework **5G/4C**—a reflection of both our geographic reach and our strategic direction.



5G/4C is more than a map. It's a strategic framework that guides how we lead, invest, and grow.

5G/4C is how we describe our region, and how we lead within it.

*These cities are economic engines and cultural hubs, places of deep heritage, resilience, and untapped opportunity.*

- 5G** FIVE GATEWAY CITIES WE SERVE
- ATTLEBORO
  - BROCKTON
  - FALL RIVER
  - NEW BEDFORD
  - TAUNTON

- 4C** FOUR COUNTIES IN OUR REGION
- BARNSTABLE COUNTY
  - BRISTOL COUNTY
  - DUKES COUNTY
  - PLYMOUTH COUNTY

*These goals ground our work and ensure we remain future-focused, adaptive, and impactful.*

- 5G** OUR FIVE STRATEGIC GOALS
- ASSET DEVELOPMENT
  - COMMUNITY LEADERSHIP
  - GOVERNANCE
  - PHILANTHROPIC SERVICES
  - SUSTAINABLE BUSINESS MODEL

- 4C** FOUR LENSES THAT SHAPE OUR WORK
- CAPACITY
  - CAPITAL
  - COMMUNITY
  - CULTURE



SCCF Arts & Culture Committee at The Ignition Space, Fall River

# TRUSTED EXPERTISE, YOUR FIRST CALL FOR YOUR PHILANTHROPIC GOALS

*“This plan is a collective vision—shaped, inspired, and made possible by our board, our communities, and all who believe in the power of local philanthropy. It builds on past success while charting a bold course for the future. We knew rising to meet the urgency of this moment would require more than ambition. It would require deep knowledge of the region, experience in the sector, and trusted expertise in philanthropic services. That’s the thread running through every part of this plan. It’s how we honor the trust placed in us, by donors, advisors, and nonprofits, and how we turn shared vision into lasting impact across the region.”*

— DR. MELANIE EDWARDS-TAVARES  
PRESIDENT & CEO

## BRINGING KNOWLEDGE, DATA, AND EXPERIENCE TO EVERY CONVERSATION

Trusted Expertise is a cornerstone of our strategy and a responsibility we take seriously. We are committed to being the trusted philanthropic partner of choice in Southeastern Massachusetts, offering the highest level of service, insight, and care to every donor, advisor, and nonprofit we support. That includes using data to inform our decisions, guide our investments, and ground our work in the lived realities and strengths of the communities we serve. We are committed to learning from success—locally, regionally, and nationally, and to working alongside others to make data more accessible, so everyone, from donors to fellow funders to grassroots leaders, can lead with insight and purpose.



Connecting Youth to Art (CY2A) Convening at The Narrows Center for the Arts, Fall River.



Fall River Funders' Tour

## PARTNERSHIP & COLLABORATION:

Community Connections that Recentered the Work

*“You didn’t come with answers or directives—you came to listen, to understand, and to help build the solution with us. That meant more than any grant. It showed us you’re here for the long haul.”*

COMMUNITY PARTNER,  
FALL RIVER TOUR STOP

In the spring and fall of 2024, the SouthCoast Community Foundation deepened its long-standing commitment to listening and learning by taking to the road.

Staff and board members visited dozens of towns and cities across our region. We sat with nonprofit leaders, institutions of higher education, donors, volunteers, fund advisors, entrepreneurs, nonprofit consultants, former board members, elected officials, artists, youth organizers, educators, and small business owners.

We listened closely, to urgent needs, community priorities, and shared aspirations for the future. We heard about the power of local leadership, local change, and local philanthropy. We also heard a desire for relationships that are more proactive, deeper, and built to last, and we renewed our commitment to making that a reality.

That commitment now lives at the heart of our work. It shapes how we design scholarship and grant programs, how we support and engage our donors and fund advisors, how we convene across sectors, and how we show up as a collaborative partner.

These conversations reaffirmed our purpose and strengthened our resolve. They are shaping how we lead, how we listen, and how we move forward—together.



Brockton Funders' Tour

# LAYING THE GROUNDWORK FOR SHARED LEARNING AND REGIONAL EXPERTISE

In 2024, as part of our bold new strategic plan, we began laying the groundwork and building the infrastructure, both figurative and literal, for something powerful: a unique, inclusive space where nonprofit leaders, field consultants, financial and legal professionals, donors, and institutional advisors can come together to share knowledge, foster collaboration, and strengthen their leadership, organizations, and philanthropic practice across Southeastern Massachusetts.

**This commitment reflects our belief that trusted expertise must be cultivated, shared, and community-centered.**

Looking ahead to spring 2025, the launch of our first **CAP® Community Learning Group** marks just the beginning. This cohort-based experience, developed in partnership with the American College of Financial Services, will support local professionals, including nonprofit leaders, attorneys, wealth advisors, and philanthropic staff, as they pursue the CAP® (Chartered Advisor in Philanthropy) designation.

The Community Learning Group is part of a broader institutional commitment: by the end of 2025, all senior staff at the SouthCoast Community Foundation will be CAP® certified, ensuring our internal team is equipped with nationally recognized philanthropic planning expertise to better serve donors, advisors, and the community.

This work is deeply aligned with another major initiative, the **Nonprofit Resiliency Network**, also launching in 2025, which will offer professional development, technical assistance, and peer learning opportunities to strengthen the region's nonprofit sector.

Whether you are a donor shaping your legacy, an advisor guiding a client's generosity, a nonprofit seeking support, a consultant working to strengthen the field, or a volunteer catalyzing change through participation on our board or in one of our grant, scholarship, or community philanthropy programs, **you can expect a partner who is deeply invested in your success and in building a more connected, capable, and resilient philanthropic ecosystem for us all.**

This is how we grow the region's collective capacity to lead—and to give—with purpose.



*"Orange Billows" by Brooke Mullins Doherty,  
DCR Fall River Heritage State Park. 11*



*The SouthCoast Community Foundation's new home is at the corner of Union and Cottage Streets in New Bedford.*

# A NEW HOME FOR A NEW FUTURE

The move to our new headquarters at **350 Union Street in downtown New Bedford** was a change of address that reflects our commitment and deeper alignment to our mission and values. This street-level, centrally located space was intentionally designed to foster connection, with flexible rooms for nonprofit convenings, collaborative learning, and authentic engagement with partners across the region. Our new space reflects our belief that a community foundation must be rooted not just in purpose, but in place.

This new space expands our capacity to serve as a connector, convener, and catalyst. It provides the setting we need to build stronger relationships, deepen partnerships, and accelerate collective progress.

Looking ahead, 350 Union Street will host fund advisor gatherings, grantee convenings, cross-sector collaborations, and shared learning opportunities. It will be a hub for civic dialogue and community-driven innovation, a place where bold ideas, trusted partnerships, and regional vision come together to shape a stronger, more connected SouthCoast.



2024 Holiday Open House in  
SCCF's New Headquarters.

*“It’s wonderful walking by and seeing the Foundation’s sign in my neighborhood. It really feels like you’re right here with us—part of the community, not just serving it. That shift matters more than you know..”*

NEIGHBORHOOD  
RESIDENT AND DONOR

# THANK YOU TO OUR 2024 SUPPORTERS!

## \$100,000+

Anonymous (1)  
Richard S. Anderson  
Revocable Trust  
Barr Foundation  
Justa M. Brooks  
Commonwealth of Massachusetts  
Department of Housing and  
Community Development's  
CARES Act Community  
Development Block Grant Food  
Security Program  
Dr. Irwin M. and Joan K.\* Jacobs  
Klarman Family Foundation  
Cynthia G. Kruger Revocable Trust  
Mindy and George Matouk  
Barney and Temple Shauble  
Lisa and James Valone  
Yan Wang  
Fred and Betty Worsh

## \$50,000 - \$99,999

Betty J. Cambra Revocable Trust  
Island Foundation  
Commonwealth of MA-  
MA Office of Travel and Tourism  
Erica Pereira  
Jonathan and Eve Rounds  
The Shifting Foundation  
Joe Van Sloun  
Mr. Jacques Louis Vidal

## \$25,000 - \$49,999

Anonymous (1)  
Acushnet Foundation  
BankFive  
BayCoast Bank  
Eric Braitmayer  
Carney Family Charitable  
Foundation  
City of New Bedford  
Commonwealth of Massachusetts  
Cummings Foundation  
Jeanne and John Fabian Jr.  
M. Temple Fawcett Trust  
Christopher Goolgasian  
Atty. Kenneth D. Lipman  
Kerry Lynch and Dean Slocum  
Nancy J. Urban  
Edith B. Wislocki

## \$10,000 - \$24,999

Anonymous (1)  
Barry Investment Advisors  
Sarah and Allen Berry  
Bristol County Savings  
Charitable Foundation  
John Carter III and Nicole Page  
Ralph and Heidi Derbyshire  
Allan and Priscilla Ditchfield  
New Bedford Creative /  
New Bedford Economic  
Development Council  
Phalarope Foundation  
Hamid Samandari  
SouthCoast Wind Energy LLC

Tetreault Insurance Agency, Inc.  
Tua Walter Thomas Jr.  
Tibest Philanthropy  
David and Nancy Twichell  
United Way of Greater New Bedford  
Scott A. Webster

## \$5,000 - \$9,999

Anonymous (1)  
Nancy and Jack\* Braitmayer  
Claremont Companies  
Ann and James Conway  
Janet and Bill Coquillette  
Tammy Dayton  
Robert and Patricia DeAngelis  
The Downey Family  
Ralph Eustis  
Fairhaven Shipyard Companies  
Michael and Megan Falvey  
Jerome Frazell and Nancy Wilder  
Rachel and Wyatt Garfield Jr.  
Lance and Shaina Humphrey  
Charles L. Johnson Jr.  
John Korn and Jayne Rebello Korn  
Nancy Kurtz  
Christopher Makepeace  
and Marilyn Whalle  
Mass Cultural Council  
Est. of Richard J. Medicke  
Dr. Steven J. Mendes, MD  
Joop and Ria Nagtegaal  
New Bedford Cultural Council  
Thomas and Jill Pappas  
PayPal Giving Fund  
Carl and Leslye\* Ribeiro  
Southcoast Health  
Spirit of Somerset Festival  
Carol Taylor and John Deknatel  
The Weatherlow Foundation  
Marcy Wintrub and Duane Barton  
Danielle and Abe Yokell

## \$2,500 - \$4,999

David Ames, Jr.  
Patricia and Christopher Arnold  
Baldwin Brothers LLC  
Stephan and Maureen Baptista  
Chrissie Bascom  
Linda and John Bodenmann  
Irene and Norman Buck  
Daly Kenney Group LLC- dba Dunkin  
(New Bedford & Fairhaven)  
Zelinda and John Douhan  
Pamela and John Evans  
Kathleen and James Feeney  
Katharine Garfield and Sarah Berry  
Julie and Jordan Hitch  
James S. and Dr. Bess Hughes  
Michael B. and Martha Keating  
Kathleen Mahoney  
Kim McCabe  
Milestone Mortgage Solutions Inc.  
Moby Dick Brewing Co Inc.  
Sean Moriarty  
Needham Bank

Christina O'Connor  
One Southcoast Chamber  
PACE, Inc.  
Prime Buchholz & Associates  
RFG- Bristol Wealth Advisors  
Rite-Solutions, Inc.  
Saunders-Dwyer Home for Funerals  
June A. Smith  
and Kenneth A. Shwartz  
Howard and Fredericka Stevenson  
Suzanne Bennett  
Charitable Foundation, Inc.  
Sylvia Group,  
An Alera Group Agency, LLC  
John Vasconcellos and Bill Barr  
VIBRA Hospital of  
Southeastern Massachusetts  
Vineyard Wind LLC

## \$1,000 - \$2,499

Anonymous (4)  
Abington Bank  
Action Collection Agencies, Inc.  
Acushnet Company  
All South Lightning Protection Inc.  
Oliver Ames  
Amy J. Bare Charitable Trust  
APC Auto Body  
Arbella Charitable Foundation, Inc.  
Babbitt Steam Specialty Co.  
Talbot Baker, Jr.  
Holly and Dana Barrows  
John and Jackie Beauregard  
Genevieve and Andrew Biggs  
Bristol Community College  
Bristol County Savings Bank  
Emily Bungert  
James Carlino  
Children's Advocacy Center, a  
program of JRI  
Nicholas and Margaret Christ  
Clear Water Pools and Spas, Inc.  
D Allen Conaway  
Loretto and Dwight Crane  
D. Schumacher Landscaping, Inc.  
Gail Davidson  
Erik Domingues, MD FAAD  
Matthew and Diane Downey  
Trudy and Bruce Durland  
Elaine M. Epstein  
and James A. Krachey  
Douglas Errico  
The Falconer Family Fund  
Michael Fernandes  
Dale Ferris  
Fiber Optic Center, Inc.  
First Citizens' Federal Credit Union  
Seth and Dorothy Garfield  
George C. and Suzanne Gebelein  
Brian M. Glover  
Jim McEleney and Melissa Gordon  
Gravina Family Foundation Inc.  
Chris and Maura Haley  
Christopher and Jennifer Hart  
Peter J. Hawes

Hawthorn Medical Associates  
Nelson Hockert-Lotz  
and Susan Goldsmith  
Huntington Ingalls Industries, Inc.  
Isaksen Solar  
Elizabeth Isherwood-Moore  
Yale Jones  
Thomas and Anne Kelly  
David King  
Anna Whitcomb and Sam Knight  
Ms. Pauline Lally  
and Mr. William Paul  
Lapointe Insurance  
Mr. Gordon K. Lenci  
Susan and Michael Levasseur  
Wesley Lipchak  
MCL Enterprises  
Laura E. McLeod  
Peter A. Mello  
Celeste and Gregory Misodoulakis  
Sarah Mitchell  
Stephanie Mueller  
Sean and Stacy Mullaney  
New Bedford Day Nursery  
North Dartmouth Properties Inc.  
Old Dartmouth Historical Society  
Ronald Oliveira  
Jack Petersen Benevolent Fund  
Phoebe and William Peterson  
Retro Entertainment LLC  
dba Play Arcade  
Rhode Island Community Foundation  
Rite-Solutions, Inc.  
Cecilia and Chris Ross  
Rua-Dumont-Audet  
Insurance Agency, Inc.  
James A. Ryan  
SERVPRO  
of New Bedford/Dartmouth  
Dr. Gilbert Shapiro  
Louis E. Sousa  
South Coast Almanac  
SouthCoast Processing  
Jauna Souza-Quatrano, DMD  
Eric H. and Paula Strand  
William Straus and Kerry Shortle  
SYD & Associates  
Stephen Symonds  
Anne and Roy Tangen  
Taunton Federal Credit Union  
Veterans Transition House  
Marion and Henry Wainer  
Neal Weiss and Marge Waite  
Patrick Walsh  
Waring-Sullivan Funeral Homes  
Jessica and Phillip Whittaker  
Richard and Susan Wolfson  
G. Stewart Young  
Robert and Robin Younger  
Timm and Cate Zolkos

*\*In remembrance of our philanthropic  
supporters who have passed.*

*Full donor list available at  
southcoastcf.org.*

# DRIVING CHANGE TOGETHER

## 2025 NEW PHILANTHROPIC OPPORTUNITIES



SouthCoast Wind Fund Awards

### CREATIVE SOUTHCOAST

Creative SouthCoast invests in the people and projects that bring creativity to life in the fabric of our region. Whether it's funding local artists, supporting cultural institutions, or sparking community-driven projects, Creative SouthCoast is about celebrating expression, preserving heritage, and inspiring connection through the arts. When you give to Creative SouthCoast, you're supporting the arts and helping to shape a more vibrant, community for all ages.

### PARTNERS IN EDUCATION

With over 3,000 student applications each year, the SouthCoast Community Foundation is a trusted partner in helping the next generation reach their higher education goals. The Partners in Education Fund is built on a simple but powerful belief: that expanding access to education transforms lives and strengthens communities. This unique fund invests equally in two vital areas, providing scholarships to promising students and awarding grants to local organizations working to improve educational outcomes across our region.

When you give through Partners in Education, your donation directly supports students from our community, opening doors, easing financial burdens, and investing in brighter futures. Together, we're helping students rise and communities thrive.

### NONPROFIT RESILIENCY NETWORK

When nonprofits thrive, our entire community benefits. The Nonprofit Resiliency Network (NRN) is designed to strengthen our region's nonprofit ecosystem by supporting three key audiences: local organizations, funders, and consultants. Its goal is to help ensure long-term stability and success for the nonprofits that serve our communities. The NRN will collaborate with local nonprofits, philanthropic partners, and nonprofit consultants to deliver programming focused on training, coaching, capacity building, research, and convening.

Join us in building a stronger nonprofit sector. Your support helps the Nonprofit Resiliency Network provide critical training, coaching, and resources that ensure local organizations can serve our communities for years to come. When you give to the NRN, you invest in a more resilient SouthCoast.

### LEAVE A LEGACY THAT LASTS

Some gifts reflect thoughtful planning and a lasting commitment to the communities we care about. In 2025, we will launch the SouthCoast Legacy Society. By making a planned or estate gift, you will help create a lasting legacy for our region.

With over 30 years of trusted asset management and philanthropic stewardship, we will work with you to create a giving plan that reflects your vision and creates meaningful, long-term impact. Your best gift may be your last — and your most enduring. Let's shape your legacy, together. Be a founding member of our SouthCoast Legacy Society.



Everyone can make a difference — no matter their age.

**QUESTIONS?  
READY TO SET  
UP A FUND?**

To learn more about the above opportunities or to make a donation today, please contact Jess Haas, Chief Advancement Officer, at 508-333-9621 or [jhaas@southcoastcf.org](mailto:jhaas@southcoastcf.org).



THE DESIGN OF THIS YEAR'S  
ANNUAL REPORT IS  
ANCHORED IN THE  
CONCEPT OF  
A CONTINUUM

A visual and thematic metaphor that reflects the SouthCoast Community Foundation's enduring presence and evolving impact. The flowing lines and layered numerals evoke a sense of movement through time, symbolizing progress and the ripple effect of philanthropy across generations.

The curved lines that flow from page to page throughout the report reinforce this narrative by highlighting the themes, values, and commitments that remain constant even as the Foundation grows and adapts. Interwoven patterns and shifting gradients represent the complexity of community needs, the spirit of collaboration, and the dynamic nature of the work we do. **This report design tells the Foundation's 2024 story, one of continuity, transformation, and purpose.**



[southcoastcf.org](https://southcoastcf.org)

350 UNION STREET  
NEW BEDFORD, MA  
02740