



The Economic Progress Institute

PROGRESS IN MOTION

2024-2025 REPORT



THE 2024 RHODE ISLAND STANDARD OF NEED

25th Anniversary Edition

The Economic Progress Institute

INFORM

WIN #1:
PAYDAY LENDING REFORM

After 15 years of advocacy, Rhode Island closed the 260% APR payday lending loophole!

Starting in 2027, storefront payday lenders must follow standard lending rules — protecting Rhode Islanders from debt traps.

CHAMPIONS: REP. ALZATE, SEN. QUEZADA

VICTORY

The Economic Progress Institute

ADVOCATE



TRANSFORM

THE ECONOMIC PROGRESS INSTITUTE

PROGRESS IN MOTION

REPORT 2024-2025

HOLDING THE LINE: COURAGE IN ACTION



Dear Friends,

Progress is not inevitable. It is built through courage, persistence, and the collective determination of people who believe our economy and democracy should work for everyone.

Over the past two years, that belief has been tested. Rising costs, deepening inequality, and renewed threats to the policies that support working families have created real challenges for communities across Rhode Island. In this moment, the Economic Progress Institute has remained steadfast in advancing racial and economic justice—shaping public debate, advancing policy solutions, and ensuring that the voices of those most impacted are part of the decisions that affect their lives.

At the same time, our organization has grown in both capacity and impact. We have expanded our research and policy work, strengthened our coalition leadership, and launched the Policy and Research Learning Hub at Rhode Island College to help develop the next generation of advocates and leaders. This growth reflects both the urgency of this moment and the trust our partners and supporters place in our work.

Together, we have helped secure meaningful progress—from expanding paid family leave and strengthening healthcare protections to advancing fair lending reforms and building momentum for more equitable revenue policies. These achievements demonstrate what is possible when data, community voice, and sustained advocacy come together.

And still, the work ahead remains significant. Economic uncertainty and federal policy changes continue to place pressure on Rhode Island families, and the disparities we seek to address persist. Meeting this moment will require bold ideas, rigorous research, and the courage to advance policies that expand opportunity and protect the public good.

This is the role EPI is proud to play.

We are deeply grateful to our supporters, partners, and allies. Your commitment allows us to remain independent, data-driven, and unwavering in our pursuit of a more equitable Rhode Island.

Together, we will continue to hold the line, build community power, and advance a future where every Rhode Islander has the opportunity to thrive.

With deep gratitude,

A handwritten signature in blue ink, appearing to read "Weayonnoh Nelson-Davies".

Weayonnoh Nelson-Davies
Executive Director, Economic Progress Institute

About Us

We believe that everyone should have access to economic opportunity.

Founded in 1999 as the Poverty Institute, The Economic Progress Institute (EPI) has become a trusted voice on policies that share Rhode Island's economic vitality.

Mission

The Economic Progress Institute leads transformational and equitable budget and policy changes in Rhode Island through research, policy analysis, advocacy, and coalition building to advance racial & economic justice for low- and-modest income Rhode Islanders.

Vision

Our vision for Rhode Island is one of meaningful investment in people, providing a robust foundation for Rhode Islanders to thrive. We envision a state with a fair and adequate tax structure and an effective and well-funded public sector with essential services ensuring that people can meet their basic needs and build vibrant, just, and equitable communities.

Our Values

Our work is guided by a set of integrated values that shape how we conduct research, engage partners, and advocate for change. Our values are:

- Integrity
- Equity
- Excellence
- Active Democracy

“Standing up for Rhode Island’s working families is more urgent than ever. That is why I have been proud to help lead efforts to strengthen paid family leave through the TCI program, so that workers can spend precious time with a new child or a sick loved one without fearing for their economic security. I am grateful to the Economic Progress Institute for its continual support of paid family leave, and its ongoing advocacy for Rhode Islanders.”

— Valarie Lawson, RI Senate President

“The Economic Progress Institute plays a critical role in advancing opportunity for all Rhode Islanders. As legislators, we rely on data to guide our policies, and we depend upon EPI’s research and advocacy to inform our decision-making.”

— K. Joseph Shekarchi, Former Speaker of the RI House of Representatives

Rhode Islanders need to thrive. Economic Progress Institute is helping to lead the fight

providencejournal.com

“The Economic Progress Institute is a critical voice for working families in Rhode Island, translating complex fiscal policy into clear, practical solutions that strengthen the state’s economy and communities. Their work doesn’t end in research reports and expert testimony, or at state lines—EPI’s advocacy leadership is well-known in the growing national movement for equitable taxation and responsible revenue policy, offering valuable evidence and perspective that organizations across the country rely on. The State Revenue Alliance and other partners in Rhode Island deeply value our partnership with EPI and are grateful for the expertise, integrity, and collaborative spirit.”

— Amber Wallin, Executive Director, State Revenue Alliance

“One of the core missions of the Rhode Island Department of Labor and Training is to promote economic opportunity, health, and wellbeing for all Rhode Islanders. We are grateful to work alongside EPI in their efforts to support working Rhode Islanders achieve growth, dignity, and prosperity.”

— Matthew D. Weldon, Director, Rhode Island Department of Labor and Training



“As a grassroots, youth-led education justice organization we understand the imperative role policy plays in systems change. EPI’s work has centered and continues to center our most vulnerable populations. Most critical, EPI’s 2026 legislative agenda lifts up economic justice at the intersection of affordable housing, immigration protections, healthcare, and education. EPI’s partnership, analysis, and courageous leadership is what we desperately need in this moment.”

— Chanda Womack, Ed.D, Executive Director, Alliance of Rhode Island Southeast Asians for Education

2024-2025

Our Impact in Numbers

Our work in the last two years advanced policy, built partnerships, and engaged communities across Rhode Island.

“The Economic Progress Institute brings rigorous research and a strong commitment to equity to Rhode Island’s most important policy conversations. The Department of Human Services shares a long-standing partnership with the EPI reflecting a common vision of helping Rhode Islanders thrive by ensuring their needs and experiences are reflected in the critical decisions that shape our programs, policies, and future.”

– Kimberly Merolla-Brito, Director, Rhode Island Department of Human Services

POLICY ADVOCACY

300+

Legislative Testimonies

42

Report & Publications

58+

Presentations & Trainings



BUILDING THE PIPELINE

10

Interns and Fellows Trained

70+

Rhode Island College students participated in the 2025 Policy and Pizza, Fall Policy Institute, and the Policy & Research Learning Hub Pilot programs.



MOVEMENT BUILDING

14

Statewide Coalitions

9

National Partner Organizations

3

National Networks



THE IMPACT

350,000+

Rhode Islanders Impacted

28

Policy Wins

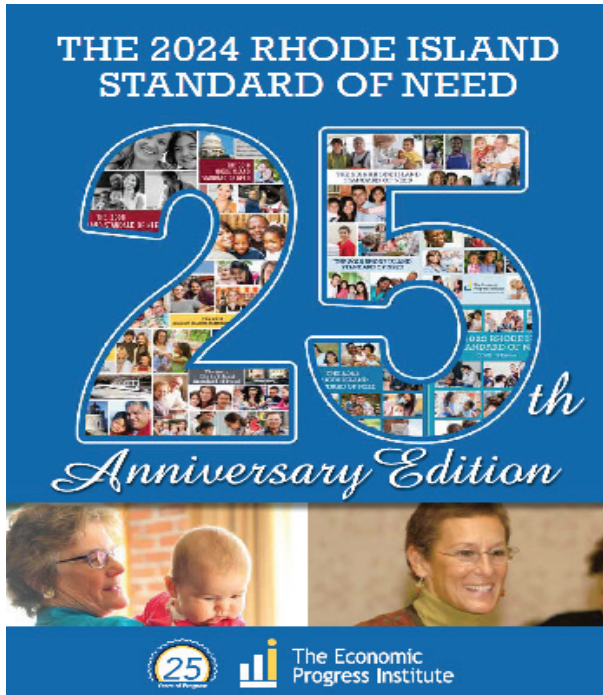
26+

Campaign & Legislative Events

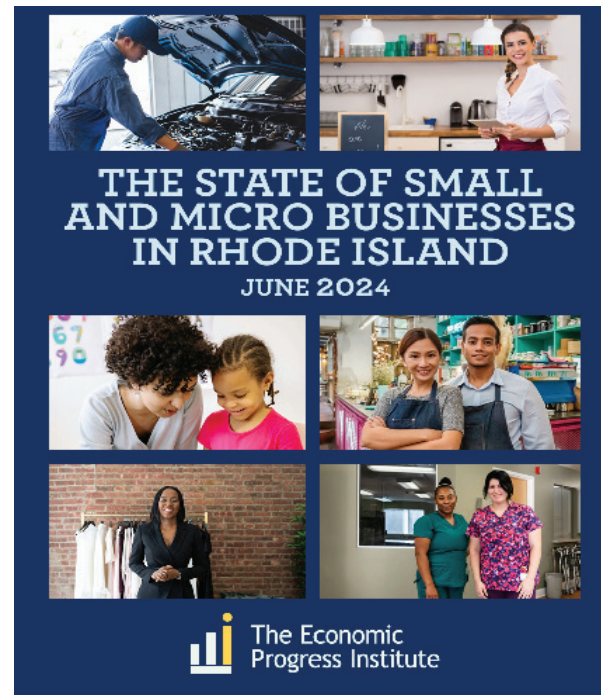


Research That Shapes Rhode Island's Future

MAJOR REPORTS

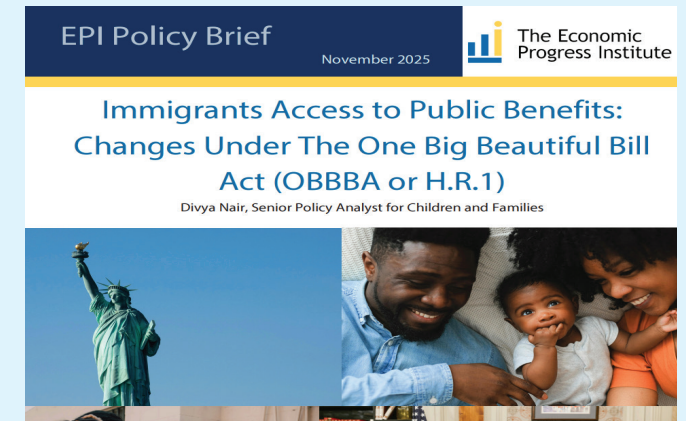
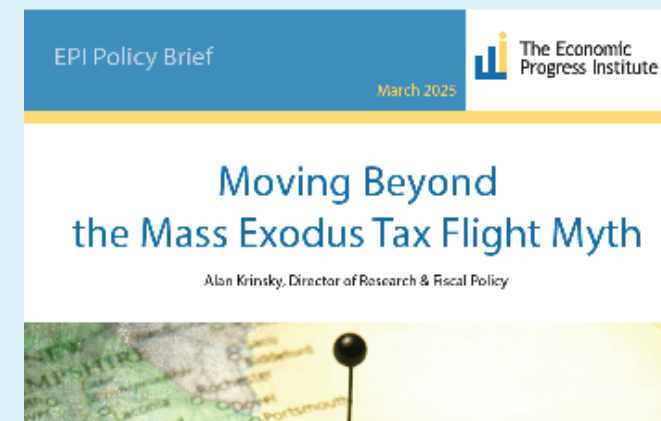
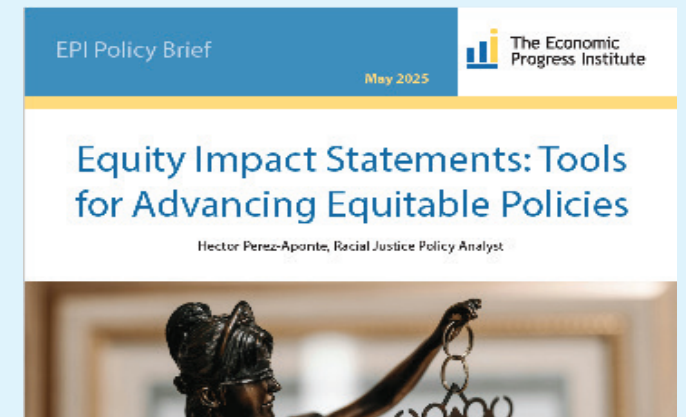
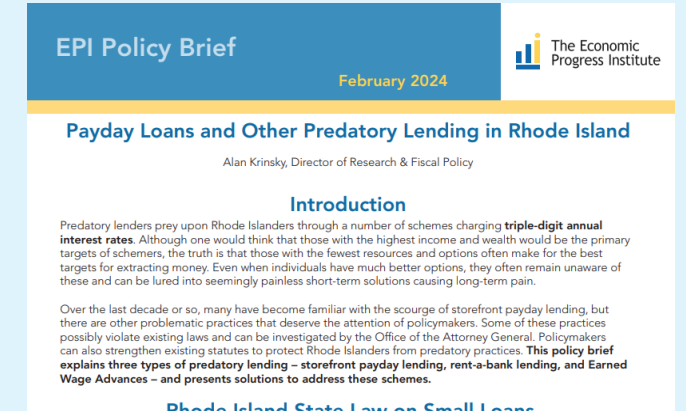
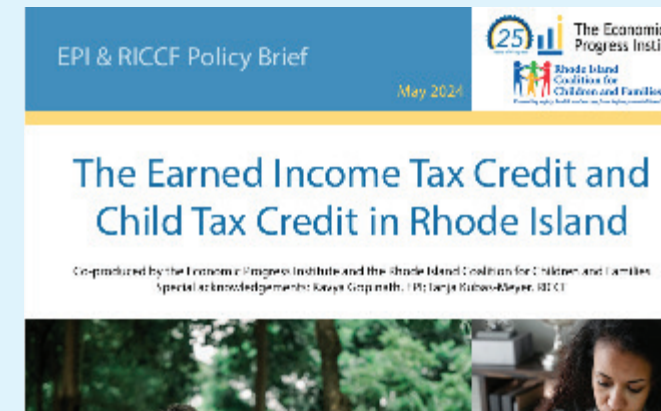


The 2024 EPI's 25th Anniversary edition of the RISN, an essential tool for understanding the true cost of living for Rhode Islanders and how state and federal supports help families, broke new ground by including 10 different family types and introduced county-level data. It also included access to an online Family Budget Calculator, highlighted the needs of older Rhode Islanders and offered a long-term perspective on programs like the Child Care Assistance Program (CCAP) and Rhode Island Works.



This report showed that nearly 99% of Rhode Island businesses are small or micro (fewer than 10 employees), and these businesses employ over half the state's workforce. The care economy, in particular, stood out as a critical sector, employing more workers and hosting more women-owned businesses than any other industry in the state. The report analyzed the structural challenges, and support systems small and micro businesses need in Rhode Island.

POLICY BRIEFS



"EPI's research reflects the entrepreneurs we serve every day and ensures they are seen, counted, and championed. Their success is Rhode Island's success."

— Julie Sullivan Owens, CEO, Social Enterprise Greenhouse

"Economic Progress Institute brings critical data that helps ensure the voices of everyday people shape Rhode Island's economic future. They are a tremendous partner and a much-needed resource for our state."

— Lisa Ranglin, Founder, President & CEO, RIBBA

Transforming Rhode Island One Policy Win at a Time



“Our grassroots, Cranston-based organization wants to advocate for policies that reduce income inequality and provide public programs and services that support the needs of Rhode Island families and communities. We regard EPI as a leader in setting the progressive policy agenda for the state and educating groups like ours so that we can play our part in making positive change for Rhode Islanders.”

– Karen Rosenberg, Chair of Cranston Forward

“The Economic Progress Institute is Rhode Island’s leading authority on tax and budget policy, and they play a critical role in bringing the voices, needs, and aspirations of Rhode Islanders into critical national debates. We’re proud to partner with EPI through the State Priorities Partnership and applaud their recent high-impact work to defend and expand cash assistance for struggling Rhode Islanders, push back against harsh federal cuts to healthcare and food assistance, and launch and lead the Revenue for Rhode Island Coalition. The Ocean State and all of us are lucky to have such a powerful organization on our side.”

– Sharon Parrott, President of The Center on Budget and Policy Priorities.

“We are proud to partner with the Economic Progress Institute to advance policies that center racial and economic justice in Rhode Island. Their successful campaign on payday lending reform in 2025 will help protect many Rhode Island families from harmful financial practices. We remain committed to supporting their ongoing efforts to advance equity impact statements and invest in Rhode Island’s children.”

– Peter Chung, Executive Director, Young Voices

When data, community voices, and sustained advocacy come together, policy change becomes possible. Over the past two legislative sessions, EPI worked with partners across Rhode Island to advance policies that strengthen economic security, protect healthcare access, and build a fairer economy.

Stronger Families

Paid Family Leave Expansion: 10,013 workers can take time to care for loved ones without sacrificing financial stability.

Child Care Access Improvements: Stronger support for **7,000 children**, working families and early childhood workforce.

Baby Bonds Program: A transformative investment opportunity for long-term economic mobility for **2,400 babies** a year on Rhode Island Works.

8,370 CNAs, while allowing more advancement through licensure pathways to improve patient care across Rhode Island.

Economic Security

Predatory Payday Lending Reform: **Tens of thousands of Rhode Islanders** are now protected from cycles of debt.

Minimum Wage Increase: Higher wages for **50,000 low-income workers** and stronger economic stability for families.

Secure Choice Retirement Program: Expanded access to retirement savings for **172,000 employees**, helping more Rhode Islanders build long-term financial security and reduce reliance on public assistance later in life.

Investments in Healthcare

Affordable Care Act Protections Codified: Residents are protected from lifetime coverage limits and discriminatory insurance practices. **1.1 million Rhode Islanders** protected.

Medicaid & Healthcare Workforce Investments: Stronger healthcare system for **310,000 Rhode Islanders**. Higher workforce standards for **16,200 care facility workers** and

Raising Equitable Revenue

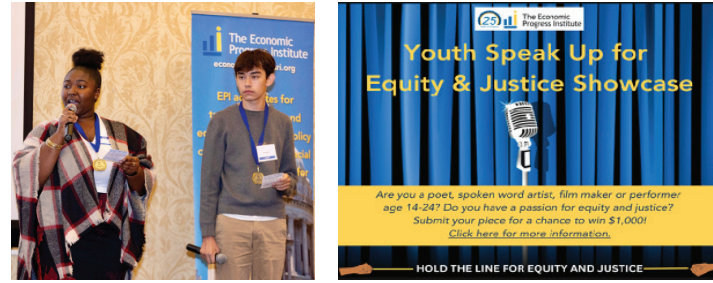
Tax on Second Homes: New funding to support housing affordability and expand access to stable homes for Rhode Island residents.



Building People Power

Highlight: Building the Next Generation of Leaders

In 2024, RIC student Enyelis Reyes won the Youth Speak Up for Equity & Justice Showcase. In 2025, Max B. and Eugenie B. helped lead the “We See You” ceremony at the We the People Conference, uplifting youth voice and leadership.



Highlight: Revenue for Rhode Islanders Coalition Campaign 2025

EPI led the Revenue for Rhode Islanders Coalition, to support a proposal for a 3% surtax on the top 1% of income earners to generate millions in revenue for housing, education, healthcare, childcare, and community investments.



Coalition Partners

- Coalition for a Multilingual Rhode Island
- Equity Impact Campaign
- Immigrant Coalition of Rhode Island
- Let RI Vote (Rhode Island Voting Access Coalition)
- Protect Our Healthcare Coalition
- Raise the Bar Coalition
- Raising Rhode Island
- Revenue for Rhode Islanders
- Rhode Island Coalition for Predatory Lending Reform
- Rhode Island Interfaith Coalition to Reduce Poverty
- Rhode Island Workforce Alliance
- RI Paid Leave Coalition
- Right from the Start
- Save RIPTA Coalition
- Voices for Better Health

“The Economic Progress Institute plays a key role in advancing racial justice and economic security for families in Rhode Island. Their leadership is a catalyst for equitable policies and transformational investments in children and families.”

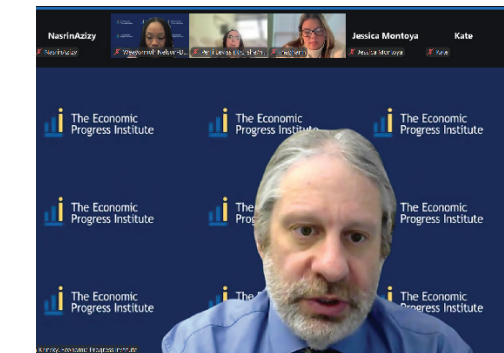
— Paige Parks, Executive Director, Rhode Island KIDS COUNT

Pipeline at Rhode Island College

The Policy & Research Learning Hub

In partnership with Rhode Island College, EPI’s Policy & Research Learning Hub pilot was launched in Fall 2025 to connect students with real-world policy practice and advocacy.

Through the Hub, students gained hands-on experience in policy analysis, research, and coalition engagement while exploring how policies shape economic opportunity and justice in Rhode Island.



2025 Fall Policy Institute

A key component of the Hub was the Fall Policy Institute which engaged Rhode Island College students in key policy topics—including budget and tax justice, public benefits, and advocacy strategies—while building practical skills through workshops, trainings, and direct engagement with EPI staff and partners.

MSW Internship Program

EPI’s internships provide Rhode Island College social work students with hands-on experience in policy research, analysis, and advocacy. In 2024, Megan Gilbert and in 2025, Corey Ames served as Research Fellows—contributing to EPI’s work while building the skills to support Rhode Islanders and advance equity-focused policy solutions.



“So far, it [the Fall Policy Institute] has helped me with disseminating information to staff at my agency, so that they are aware of how changes in policies are going to impact clients. I hope I can engage more in direct advocacy next semester, but the information and knowledge I have gained will definitely help build my confidence for advocacy in this way.”

— Lindsey Stevens, RIC MSW Student & Fall Policy Institute participant

Bringing Rhode Island Together to Create Change

In 2024 and 2025, the Economic Progress Institute convened hundreds of advocates, policymakers, students, and community members through forums, trainings, coalition events, and public engagement initiatives designed to strengthen civic participation and advance equitable policy solutions.

Annual Policy & Budget Conference

EPI hosted its signature conferences with powerful themes and keynote speakers in 2024 “Hold the Line for Equity and Justice” and 2025 “We the People: The Rhode Forward”.



Navigating Public Benefits Training

Delivered in-person capacity-building trainings annually, reaching over 300 social workers, navigators, and community health professionals each year, with a focus on public benefits access, policy updates, and strategies to support Rhode Islanders navigating safety-net programs.



EPI as Trusted Voices

EPI is a trusted voice in Rhode Island’s policy landscape. As the people’s lobbyists, we bring research, advocacy, and community-centered solutions to the conversations shaping economic justice for low- and moderate-income Rhode Islanders.



In 2024 and 2025, EPI appeared on RI PBS, Generation Rising, A Living Experiment, Community Focus, Political Roundtable, and several media outlets to explain complex policy issues and elevate the voices of Rhode Islanders.

Celebrating 25 Years Of Policy, Progress & People

1999 → The Poverty Institute is founded by Linda Katz and the late Nancy Gewirtz.	2008 → Launches Annual Policy and Budget Conference.	2017 → Successfully lobbied for paid sick leave to eligible employees under Healthy and Safe Families and Workplaces Act.
2000 → The first Rhode Island Standard of Need report is published, showing how much it costs to live and raise a family in RI.	2009 → Advanced legislation that helped Rhode Island's poorest families during the recession.	2018 → Produced Medicaid Matters report in response to attacks on Affordable Care Act.
2001 → Guide to Government Assistance Programs is published—a reference tool for social service providers and low-income families.	2010 → With Women's Fund of RI, published report on women's economic self-sufficiency.	2019 → Published Rhode Island Works: Is It Working?
2002 → One RI Coalition is convened to advocate for state investments in work support programs.	2011 → Inclusion of a budget provision that required Governor's Workforce Board to submit biennial employment and training plan.	2020 → Advocated for raising taxes on wealthiest Rhode Islanders instead of cutting critical services to ease budget shortfalls.
2003 → Successful in making Rhode Island's Tax Expenditures Report more comprehensive and timely.	2012 → The Poverty Institute becomes the Economic Progress Institute.	2021 → Works with Rhode Island Foundation and RIPEC to produce Make It Happen report recommending how the state spends ARPA funds.
2004 → Selected as the RI affiliate of the State Fiscal Analysis Initiative.	2013 → Expanded access to the state's Child Care Assistance Program.	2022 → Linda Katz retires; Weayonoh Nelson-Davies becomes executive director of Economic Progress Institute.
2005 → Establishes the RI Workforce Alliance to promote adult education and workforce training.	2014 → Successfully lobbied to expand the state's Earned Income Tax Credit, resulting in average credit for Rhode Islanders nearly doubling.	2023 → Launches Equity Impact Campaign; successfully extends abortion coverage to Rhode Islanders on Medicaid and state workers.
2006 → Trains social service providers about eligibility changes to government assistance programs.	2015 → Published State of Working Rhode Island: Workers of Color.	2024 → Leads efforts to expand benefits for Rhode Island's paid family leave program. Publishes the 25th Anniversary edition of the Rhode Island Standard of Need report.
2007 → Successfully advocates for the state to end two significant corporate tax loopholes.	2016 → Launched Protect Our Healthcare Coalition to lobby for consumer protections of Affordable Care Act.	

Looking to the future...

“For every dollar we invest in EPI we stand to gain hundreds of dollars into the most important programs serving up success for future generations - from education to healthcare to childcare. There’s never been a more important era to push our elected leadership to think bigger and to engage more people in the work to make Rhode Island a place that meet its people’s needs so they can thrive.”

— Paula Hodges, Founder Anchor Strategies, EPI Board Outgoing Development Committee Chair

For the Love of Progress

Recognizing champions who advanced economic progress for Rhode Islanders.



For 25 years, EPI has advanced policies that strengthen economic security, expand opportunity, and build a more equitable Rhode Island for all.



“We are proud to have been a long-standing supporter of the Economic Progress Institute, providing its first grant in 1999—then as the Poverty Institute—to advance advocacy for welfare reform. Through research and policy leadership, EPI remains a valued partner in strengthening the economic well-being of low- and modest-income Rhode Islanders.”

— David Cicilline, President and Chief Executive Officer, Rhode Island Foundation

“There is a classic tale for children told in ‘The Little Engine That Could’ about determination, optimism and perseverance. That little blue engine pulls a load of good things over a mountain, repeatedly saying, ‘I think I can’. EPI is that little engine for RI, pulling for a more equitable, fairer, more hospitable place for us all.”

— Linda Shaw, Interim Chair, EPI Board of Directors.

Looking Ahead

The Rhode Forward

As Rhode Island faces a shifting federal landscape with economic pressures, EPI remains focused on policies that protect families, strengthen communities, and build a more equitable future.

Federal cuts, strained safety-net systems, and projected budget gaps threaten investments in childcare, housing, healthcare, transit, and workforce development — especially for immigrant families, children, and communities of color.

This moment is an opportunity to build collective power and advance policies grounded in equity and shared prosperity.

The Rhode Island Community Food Bank and the Economic Progress Institute invite you to join us for an online community meeting to sound the alarm on how proposed cuts to the Supplemental Nutrition Assistance Program (SNAP), Medicaid, farm aid and more would harm Rhode Islanders already struggling with food security.

Weayonnoh Nelson-Davies
Executive Director
Economic Progress Institute

Andrew Schiff
Chief Executive Officer
Rhode Island Community Food Bank

Jack Reed
Senator

Sheldon Whitehouse
Senator

Seth Magaziner
Congressman

Gabe Amo
Congressman

Our Charge for the Year Ahead

In 2026, EPI will:

Defend Essential Supports: Protect access to healthcare, nutrition assistance, and public benefits amid federal rollbacks and disinvestment.

Advance Tax Justice & Fair Revenue: Advocate for equitable revenue solutions that meet Rhode Island’s needs and sustain public investments.

Champion Equity-Centered Policy: Promote solutions rooted in racial equity, economic opportunity, and democratic participation.

Build Community Power: Strengthen coalition advocacy, public education, research dissemination, and grassroots engagement statewide.

Develop the Next Generation of Advocates: Expand learning and fellowship opportunities to grow leadership pipelines and research capacity.



THE ECONOMIC PROGRESS INSTITUTE TEAM

Our Staff

Nasrin Azizy
Communications Associate

Kavya Gopinath
State Policy Fellow

Nina Harrison
Policy Director

Helen Kifle
Operations Director

Alan Krinsky
Director of Research & Fiscal Policy

Divya Nair
Senior Policy Analyst for Children & Families

Weayonnoh Nelson-Davies
Executive Director

Hector Perez-Aponte
Racial Justice Policy Analyst

Alisha Pina
Sr. Communications Consultant

Karina Tordoya
Office Manager

Linda Katz
EPI Co-Founder (retired)

Our Board of Directors

Collin Bailey
Treasurer

Geraldine Barclay-King

Doris Blanchard

Haley De La Rosa

Rebecca Dupras

Erica Hammond
Secretary

Paula Hodges

Dwayne Keys
Chair

Sarnya KP

Melody Lawrence

Perri Leviss

Joseph Maya
Rodriguez

Kevin McElroy

Catherine Pena

Linda Shaw
Vice Chair

Ana C. Urena

Special Recognition to the consultants and experts who have provided capacity and guided our transformation.

- Ann Clanton
- Karen Chretien
- Juan Espinoza
- Linda Katz
- Karen Malcolm
- Nick Merrill Design
- Kristen Morales
- Margaux Morriseau
- Promoting Good
- Facilitate Change
- The Law Office of Saikon Gbehan
- Andrew Grande

With Gratitude to Our Supporters

Sustainability Circle Members

- Rachel & Josh Flum
- Lisa Guilette
- Carolyn Mark & Bill Stone
- Dwayne Keys
- Lisa Roth Blackman
- Linda Shaw & Bob Hughes
- Paula Hodges
- Anne-Marie Harrington
- Alan & Bari Harlam

Philanthropic Partners

- The Annie E. Casey Foundation
- The Carter Family Charitable Trust
- The Center on Budget and Policy Priorities
- The Center for Responsible Lending
- Family Values at Work
- Nordson Corporation Foundation
- Papitto Opportunity Connection
- The Rhode Island Foundation
- The Stoneman Family Foundation
- United Way of Rhode Island
- Women's Fund of Rhode Island
- Nellie Mae Education Foundation
- Tides Foundation
- Bristol County Savings Charitable Foundation

National Partners

- Economic Analysis and Research Network (EARN) (Economic Policy Institute)
- Family Values At Work
- Institute on Taxation and Economic Policy (ITEP)
- State Priorities Partnership (SPP) (The Center on Budget and Policy Priorities)
- State Revenue Alliance

“The Economic Progress Institute’s work is truly top-notch. At ITEP, we’re grateful for their deep commitment to advancing equitable tax policies. EPI consistently champions policies that raise revenue in more equitable ways by asking more of those at the top of the income scale who pay the lowest effective tax rates, while making a strong case for robust refundable tax credits that support low-income and working-class families. Their efforts to push back against top-heavy giveaways and promote more balanced policy solutions are vital in moving Rhode Island toward a more progressive state and local tax system and a stronger future for all Rhode Islanders.”

– Aidan Davis, State Policy Director, Institute on Taxation and Economic Policy (ITEP)

“The Economic Progress Institute has been an invaluable partner in the work we do at Rhode Island for Community & Justice. EPI’s research and advocacy give our youth and the communities we serve a voice in the policy conversations that shape their futures. Because of EPI’s commitment to equity and economic justice, Rhode Island is a stronger, more informed, and a more inclusive state.”

– Rose Albert, Executive Director, Rhode Island for Community and Justice

Corporate and Community Partner Sponsors

- AARP Rhode Island
- ACLU of Rhode Island
- AFL-CIO
- Bay Coast
- Blue Cross Blue Shield of Rhode Island
- Brown University Community Engagement
- Berkshire Bank
- Bliss Gives
- Carolyn Mark & Bill Stone
- Centreville Bank
- Community Food Bank RI
- D Key Solutions
- Dupras Law
- Eastern Bank
- Facilitate Change
- Fastsigns
- Foster Forward
- Harrison Law Associates
- HealthSource RI for employers
- Helena and Bill Foulkes
- Hinckley Allen
- Hope and Main
- Housing Network
- Housing Works
- Jewish Alliance
- Latino Policy Institute
- Navigant Credit Union
- Neighborhood Health Plan of RI
- Nellie Mae Foundation
- One Rhode Consulting
- Ocean State Center for Independent Living
- Papitto Opportunity Connection Foundation
- Paula HodgesPlanned Parenthood of Southern New England
- Parents Leading for Educational Equity Polaris
- Rachel Flum
- RI Coalition for Children & Families
- RI College
- RI Community Food Bank
- RI Organizing Project
- RI Parent Information Network
- RI Women’s Bar
- RI Women’s Bar Association
- Rhode Island Association for the Education of Young Children
- RIBBA
- Rhode Island Coalition Against Domestic Violence
- Rhode Island Coalition for Children and Families
- RICJ
- RIOP
- RIPIN
- Scott Whittum, CPA
- SEIU 1199 NE
- The Jewish Alliance
- The MUSE Foundation of Rhode Island
- United Healthcare
- United Way of RI
- Washington Trust
- West Elmwood Housing Development Corporation
- Women’s Fund of RI

“United Way of Rhode Island values our strong partnership with the Economic Progress Institute. Their data-driven research and advocacy play a vital role in shaping policies that truly reflect the needs of our communities. By working together—especially through the use of policy and research—we are helping to build a more informed, equitable, and resilient Rhode Island.”

– United Way of Rhode Island

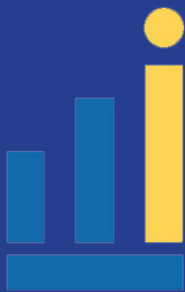
“There are too few people and organizations that speak up for low income Rhode Islanders. And fewer still who can bring to bear both the data and advocacy that are vital to legislators like myself to move these critical issues forward. I have been thrilled to have the leadership of an organization like EPI when proposing bills to help families that are struggling.”

– State Representative Arthur Handy

DONORS

Rebecca Aponte	Toby Ayers	Gregory Bowman	Sandra Cano	Amy Copperman	David Delponte	Melissa Emidy	Saikon Gbehan Isijola	Adam Greenman	Paul Iturralde
Rele Abiade	Lenette Azzi-Lessing	Diana Boyadjian	Janice Cardarelli	Vanessa Correia	Linda DeMoranville	Stefanie Engelhardt	Aldwin George	Connie Grosch	Jake Jackowski
Viviana Abreu-Hernandez	Collin Bailey	Heather Boyce	Rory Carmody	Terri Cortvriend	Manuel Depina	Sandra Enos	Deborah George	Lisa Guillette	Alison Jackson
Kaila Acheson	Ibn Hashim Bakari	Jennifer Boylan	Michelle Carr	Carol Anne Costa	Yarisa Diaz	Claudia Espaillat	Kathleen Gerard	Saranya Gunasekaran	Susan Jacobsen
Jonathon Acosta	Jillian Balzano	Margaret Boyle	Shannon Carroll	Yolanda Covington-Ward	Carmen Diaz-Jusino	Juan Espinoza	Benedetto Getley	Erica Hammond	Jim Jahnz
Doris Adesuyi	Cyrus Barchue	Peg Boyle	Liana Cassar	Christian Cowan	Mauro Diaz-Hernandez	Mary-Beth Fafard	Katherine Gewirtz	Arthur Handy	Teddi Jallow
Kimberly Ahern	Geraldine Barclay-King	Thomas Brendler	Jeannine Casselman	Robert Cox	Michael DiBiase	Susan Feeley	Rebekah Gewirtz	Alan & Bari Harlam	BhavaniDevi Jayavelu
Morris Akinfolarin	Nalommy Baret	Kristin Brennan	Kaitlynn Castillo	Robert Craven	Brandi DiDino	Marisol Feliciano	Nancy Giambusso	Sharon Harmon	Kathy Jellison
Rose Albert	Leanne Barrett	Lindsey Brickle	Tisha Causeway	Jonathan Crawford	Josephine Diggs	Paola Fernandez	Charles Gibbs	Candace Harper	Tracy Jeter
Virgina Albert	Laurie Barron	Laura Brion	Nywel Cheaye	Patrick Crowley	Deepak Dilipkumar	Robert Ferreira	Myron Gibson	Ann-Marie Harrington	William Johnson
Dennis Algieri	Kamila Barzykowski	Abigail Brooks	Melissa Cherney	Susan Cunningham Elliott	James Diossa	Raul Figueroa	Georgine Gibson	Mary Harrison	Judy Jones
Des Allen	Amanda Basse	Jimmette Brooks	Ian Chinich	Abednego Dahn	Christopher Doepper	Tory Flis	George Gibson	Nina Harrison	Guymanie Joseph
William Allen	Trent Batson	Richard Brooks	Karen Chretien	Brenda Dann-Messier	Christine Donofrio	Michael Florczyk	Gayle Gifford	Eileen Hayes	David Karoff
Melvin Alperin	Jill Beckwith	Steven Brown	Hersh Christino	Roshni Darnal	Erin Donovan-Boyle	Rachel & Josh Flum	Megan Gilbert	Roberta Hazen	Linda Katz
Christine Alves	Sarah Beinecke-Richardson	Marisa Brown	Doepper Christopher	Michelle Davidson	Tim Draper	Frank Flynn	Rebecca Ginsburg	Amy Healey	Ellen Kellner
Cristina Amedeo	Carolyn Belisle	Randy Buck	Alexandra Christou	Nathaniel Davies	Grace Duffy	Natasha Foster	Michael Healey	Marie Hennedy	Dwayne Keys
Obenewa Amponsah	Kyle Bennett	Madeline Burke	Peter Chung	Nathasha Davies	Michael Dunican	Bill Foulkes	Meghan Hicks	Michael Healey	Khadija Khan
Susan AnderBois	Nancy Benoit	Elizabeth Burke Bryant	Faith Chybowski	Charles Davis	Allyson DuPont	Helena Foulkes	Megan Hicks	Marie Hennedy	Abeer Khatana
John Andrews	Marcela Betancur	Liza Burkin	Regina Clement	Ernie Davis	Rebecca Dupras	Jocelyn Foye	Eric Hirsch	Megan Hicks	Jessica Kiebler
Natanie Anilovich	Beth Bixby	Shawndell Burney-Speaks	Brenda Clement	Adriana Dawson	Eugene Dyszlewski	Fred Franklin	Paula Hodges	Eric Hirsch	Helen Kifle
Angie Ankoma	Doris Blanchard	Valdir Cabral	Betty Clinton	Charles Davis	Nicole Dyszleskwi	Barry Friedman	Enid Hoff	Paula Hodges	Susan Killenberg
Jocelyn Antonio	Andy Boardman	Mary Jo Callan	Amy Cola	Ernie Davis	Allyson DuPont	Kenya Fullen	Jill Holloway	Enid Hoff	Charles King
Dawn Apajee	Elisabeth Borno	Eric Calogianes	Julie Collins	Adriana Dawson	Rebecca Dupras	Megan Fusco	Jill Holloway	Jill Holloway	Jessie Kingston
Linda J. Armstrong	Sarah Bouchard	Chris Campanile	Carson Colmore	Haley De La Rosa	Eugene Dyszlewski	Raymond Gagne	Carlton Howard	Carlton Howard	Rebecca Kislak
Jasmine Arnold	Tom Boucher	Melissa Campbell	Melanie Coon	Sophia De los Reyes	Nicole Dyszleskwi	Justice Gaines	Jonathan Howard	Jonathan Howard	Nuru Kiyemba
	Courtney Bourns		Stephen Coon	James Dealy	Charline Early	Yanaiza Gallant	Robert Hughes	Robert Hughes	Julie Kollie
			Angelyne Cooper	Ashley Deckert	Cyndy Elder	Diana Garlington	Melissa Husband	Melissa Husband	Sarnya KP
					Tiondra Ellis	Danielle Gauthier	Theophilus Julukon Nelson I	Theophilus Julukon Nelson I	Kiley Krafve
					Jorge Elorza	Emma Gauthier	Abdullah Issa Chtewi	Abdullah Issa Chtewi	Lisa Kresge
						Stephanie Geller			Alan Krinsky

Karen Krinsky	John Marion	Silvia Melgar	Kelly Nevins	Gregg Perry	Joseph Maya Rodriguez	Shideh Shafie	Tejal Tarro	James Vincent	Tiger Womack
Tanja Kubas-Meyer	Carolyn Mark	Inés Merchán	Rachel Newman Greene	Cathrine Petrangelo	Pablo Rodriguez, M.D.	Josephine Shagwert	Tashia Tate	Vanessa Volz	Jennifer Wood
Nirva Rebecca LaFortune	Carole Marshall	Kimberly Merolla-Brito	Cortney Nicolato	Punitha Samily Philipraj	Amy Romero	Linda Shaw	Denise Tatro	Eliza Vorenberg	Connie Worthington
Jasper LaFreniere	Louis Martin	Nick Merrill	David Nicolato	Vimala Phongsavanh	Sokeo Ros	Carolyn Sheehan	Ralph Tavares	Carla Wahnnon	Nancy Xiong
Lorraine Lalli	Mary Beth Martin	Zack Mezera	Elena Nicoella	Beth Pinkham	Charon Rose	Jessica Holden Sherwood	Barbara Taylor	Inna Walker	Gallant Yanaiza
Lindsay Lang	Jesse Martin	Stephen Michon	Zachary Nieder	Laurie-Marie Pisciotta	Marti Rosenberg	Eric Shoen	Bonnie Taylor	Rosetta Walker	Swapna Yeluri
Silvermoon LaRose	Vincent Marzullo	Rachel Miller	Christina Niko	Bianca Policastro	Lisa Roth Blackman	Richard & Linda Silverman	Michelle Taylor	Wendy Wallace	Angela Yinglang
Melody Lawrence	Shannon Massaroco	Jeff Migneault	Albert Nixon	Gretchen Raffa	Marinel Russo	Barbara Silvis	Vilna Tejada	Linda Ward	Rachel Yoder
Patricia Leddy	Michelle Mathiesen	Kadijatu Minah	Daniel OConnell	Lisa Raiola	Randall Sacilotto	Barbara Silvis	Ciata Tengbeh	larry Warner	Myrth York
Michele Lederberg	Hugh Minor	Sydney Montstream	Milia Odom	Adam Ramos	Sam Salganik	Sash Sinha	Nicole Tingle	Allen Waters	Martha Young
Jen Leigh Kinder	Sabina Matos	Alex Moore	Molly Marie Olver	Dwiodwih Ramos	Christopher Samih Rotondo	Shashwat Sinha	Elizabeth Tobin-Tyler	Latoya Watts	Stephanie Yu
Laura Levine	Michael Mattone	Mariana Moore	Trisha Onofrio	Diego Ramos	Donna Sams	Shashwat Nirmals Sinhas	Heidi Toppel	Richard Weiner	Stanley Zimmering
Perri LeViss	Joseph Maya Rodriguez	Anna Morales	Monsurat Ottun	Juan Ramos	Deanna San Antonio	Lauri Smalls	Karina Tordoya	Vivian & Dan Weisman	Valerie Zolezzi-Wyndham
Jeff Levy	MaryRose Mazzola	Jenny Morales	Rona Padmore	Lisa Ranglin	Fatima Santos	Christine Smith	Zoya Tseytlin	Michael Weiss	
Catherine Lewis	Constantino McBrier	Helen Morales	Christine Paige	Annie Ratanasim	Irene Santos	Monica Smith	Whitney Tucker	Miriam Weizenbaum	
Khadij Lewis Khan	Megan McCormack	Margaux Morisseau	Elango Palanisamy	Kimberly Rauch	Ramona Santos Torres	Grace Sneesby	Amanda Turco	Ellenette Welborn	
Deborah Linnell	Kevin McElroy	Helena Moronta	Carmen Panacopoulos	Jennifer Rawlings	Tracy Sartrys	Cheryl Space	Rachel Turner	Katie West	
Katherine Linwood	Beatrice McGeoch	Bernice Morris	Alyson Panzarella Girard	Daniel Reardon	Mireille Sayaf	Erin Spaulding	John Tyler	Katherine West	
Beth Lobdell	Kate McGovern	Samuel Morris	Nina Pande	Marcy Reyes	Andrew Schiff	Tina Spears	Linda Ujifusa	H. Philip West	
Catarina Lorenzo	Mary MCGovern	Katie Murray	Paige Parks	Omar Reyes	Debbie Schimberg	Chandana Srinivas	Ana Urena	Peter Weyman	
Sent. Seth Magiziner	Kathy McKeon	Larome Myrick	Rosa Pastor Santa	Darlene Reza Rossi	Merrill Schmidt	Keith Stokes	Sabrina Uribe	Henrietta White-Holder	
Bethany Lyons	Tenee McKinley-Brooks	Suchitra Nair	Joyce Paterson	Wanda Rezendes	Cathy Schultz	Bill & Carolyn Stone	Karina Urquizo	Scott Whittum	
Maureen Maignet	Maribel Echeverry McLaughlin	Suzie Nakasian	Yvonne Peal	Monah Rhodes	Shanna Sedgwick	Gail Stout	Zulma Valenzuela	Paul Wilde	
Medha Makhlof	Alexandra Medeiros	John Nazarian	Catherine Peña	James Riely	Louise Seitsinger	Richard Streitfeld	Alicia Vallette	Tracey Wiley	
Garret Mancieri	George Nee	Lindsay Neagle	Jenny Pereira	Lucy Rios	Shawn Selleck	Sophie Tan	Bridget Valverde	Victoria Williams	
Gregory Mancini	Weayonnoh Nelson-Davies	Hector Perez-Martin	Michelle Rivera		Judith Semonoff	Tersea Tanzi	Carlos Vargas	Juan Wilson	
	Ingrid Mejia					John Tarantino	Lammis Vargas	Nancy Wolanski	
						Natee Tarawali	Josselyn Velasquez	Scott Wolf	
							Anusha Venkataraman	Chanda Womack	



The Economic Progress Institute

600 MOUNT PLEASANT AVENUE, BUILDING 9, PROVIDENCE, RI 02908

TELEPHONE (401) 456-8512 | FAX (401) 456-9550 |

INFO@ECONOMICPROGRESSRI.ORG

WWW.ECONOMICPROGRESSRI.ORG